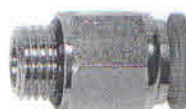
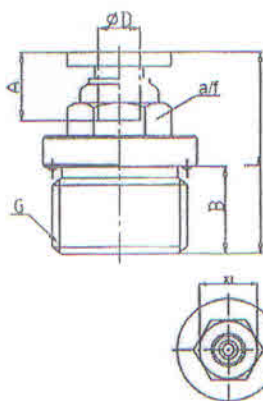


Push-in fittings series manufactured in plastic and nickel-plated brass.
All parts are suitable for use with hoses, tubes or pipes made of plastic and copper.

Temperature range:	-20 °C to 80 °C
Material:	Plastic and nickel-plated brass
Sleeve:	Plastic
Sealing surface:	Parallel version: O-ring in housing Conical version: PTFE thread coating
Medium:	Compressed air, neutral and safe gases and liquids*
Areas of application:	Air, vacuum
Recommended hose:	PU or PA (nylon)



122.014-10

Male connector, parallel male thread with O-ring (NBR) and outer hex

Art. No.	Type No.	Ø D mm	Thread	Max. working pressure bar	L mm	A mm	B mm	a/f mm	Hexagon socket head mm	X1 mm
109112	122.005-4	4	M5	15	20.8	14.9	4.0	10	2	10.0
109113	122.005-6	6	M5	15	22.2	16.0	4.0	12	2	12.0
109114	122.018-4	4	G 1/8	15	19.3	14.9	5.5	10	3	10.0
109115	122.018-6	6	G 1/8	15	20.2	16.0	5.5	12	4	12.0
109116	122.018-8	8	G 1/8	15	27.1	18.1	5.5	14	5	14.0
109117	122.018-10	10	G 1/8	15	28.9	20.3	5.5	17	5	17.0
109118	122.018-12	12	G 1/8	15	31.6	22.7	5.5	21	5	20.0
109119	122.014-4	4	G 1/4	15	17.4	14.9	6.5	10	3	10.0
109120	122.014-6	6	G 1/4	15	20.9	16.0	6.5	12	4	12.0
109121	122.014-8	8	G 1/4	15	23.0	18.1	6.5	14	6	14.0
109122	122.014-10	10	G 1/4	15	29.9	20.3	6.5	17	6	17.0
109123	122.014-12	12	G 1/4	15	32.6	22.7	6.5	21	6	20.0
109124	122.038-6	6	G 3/8	15	19.5	16.0	7.5	12	4	12.0
109125	122.038-8	8	G 3/8	15	22.1	18.1	7.5	14	6	14.0
109126	122.038-10	10	G 3/8	15	25.9	20.3	7.5	17	8	17.0
109127	122.038-12	12	G 3/8	15	28.6	22.7	7.5	21	8	20.0
135627	122.038-14	14	G 3/8	15	34.9	24.3	7.5	22	8	23.5
109128	122.038-16	16	G 3/8	15	36.1	24.0	7.5	24	8	23.5
109129	122.012-6	6	G 1/2	15	22.6	16.0	9.5	12	4	12.0
109130	122.012-8	8	G 1/2	15	23.2	18.1	9.5	14	6	14.0
109131	122.012-10	10	G 1/2	15	24.5	20.3	9.5	17	8	17.0
109132	122.012-12	12	G 1/2	15	31.1	22.7	9.5	21	8	20.0
135628	122.012-14	14	G 1/2	15	34.9	24.3	9.5	24	10	23.5
109133	122.012-16	16	G 1/2	15	38.1	25.0	9.5	24	10	23.5